



PublicPrivate
Partnership
Commission

Frontier of excellence

Presented to IGF

31st May 2022

BICC, Lilongwe

DIGITAL MALAWI PROJECT IMPACT

What the project is trying to achieve?



Affordable, high quality connectivity services for both public and private sector

Improving Government's capacity to form and deliver digital public services

Improved government service delivery, improved outcomes in education, innovation, youth employment, inclusive wealth creation, etc

PROJECT COMPONENTS

Total – US \$ 72.4 Million

1

- **Digital Ecosystems - US \$9.5 Million**

2

- **Institutional Capacity, Innovations, Regulatory Instruments,**

3

- **Digital Connectivity – US \$34 Million**

4

- **Public Institutions, MAREN, Rural Broadband Networks**

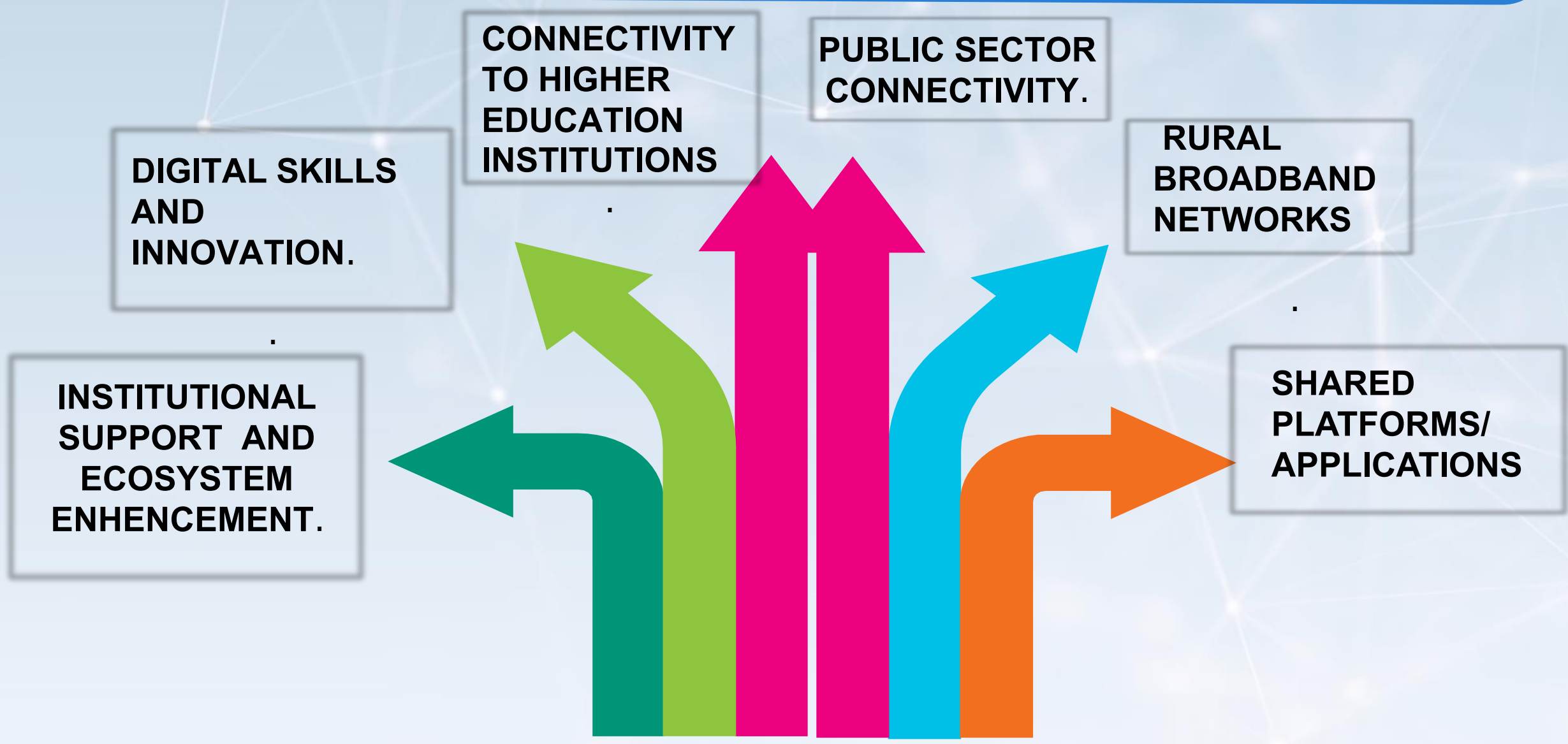
5

- **Digital Platforms – US \$23.9 Million**

6

- **Institution Capacity, Shared Platforms, Demonstrative Applications**

SIX KEY RESULTS AREAS FOR DIGITALIZATION UNDER THE PROJECT





1

INSTITUTIONAL SUPPORT AND ECOSYSTEM ENHANCEMENT

- **Data Protection Bill- Legislation Drafted**
- **Digital Taxation – Under Review the protection and security of data**
- **Capacity Building - Training for MACRA, e-Government Ongoing**
- **USF Gap Analysis - Study Completed**
- **Digital Government Legislation - Drafted and submitted to Mol: the bill proposes establishment of MITA to implement the public sector digitization agenda**
- **Digital Government Strategy - Completed**
- **National Broadband Strategy – Completed**
- **Cybersecurity Maturity Model Assessment – Completed**

2

DIGITAL SKILLS AND INNOVATION

- Tooling the youth for the internet economy – Target 5,000
- Grants Agreements Worth of US \$ 2,000,000.00 signed with Six Tech Hubs for support of entrepreneurship and the training of over 5,000 youth and women:
 - Programming, web development, digital marketing, digital graphics, e-lancing, or youth in all corners of the country
 - Incubation and acceleration for youth start ups
- Over 250 Computers distributed
- Next Phase of Grants to Commence before June 2022





3

CONNECTIVITY TO HIGHER EDUCATION INSTITUTIONS

- **Improved educational outcomes for high education institutions – 61 sites at least 46,0000 students**
- **Support given through Malawi Research and Education Network (MAREN)**
- **Enables higher education institutions to get international connectivity**
- **International Connectivity - 1.2 Gbps Delivered**
- **National Connectivity - Connection of 61 sites completed**
- **Providing campus WiFi to 7 public universities**



4

PUBLIC SECTOR CONNECTIVITY

- **Improving public sector connectivity in order to digitalize public services**
- **Digital Mapping of all Government sites - 11,000 plus sites mapped – Completed**
 - **PPP Connectivity for 500 sites – Procurement launched September 2021**
 - **LAN – Capital Hill and Some Sites in Salima under implementation**
 - **LAN Completed April 2022**
 - **Public Sites Connectivity to be Completed by December 2022**



5

RURAL BROADBAND NETWORKS

- **USF Gap Analysis Study Completed**
- **Free Wi-Fi - 30 sites connected and operational**
 - **Hospitals, Schools, Libraries, Markets**
- **Second Phase under planning**
 - **108 candidate sites identified**



6

SHARED PLATFORMS/ APPLICATIONS

- The foundation for public sector digitalization
- Digital Government Legislation – Establishment of Malawi Information Technology Authority (MITA) – Legislation submitted to Mol for further processing
- Data Center Establishment - for common standards in public sector
- HCI Technology - Procurement Completed
- Enterprise Solution user requirements finalized
 - ✓ Interoperability and Data Exchange Platform
 - ✓ Public Key Infrastructure (PKI)
 - ✓ Malawi Digital Services Portal
 - ✓ Mobile Delivery Platform
- Demonstrations Applications (Solutions)
 - Electronic Government Procurement System (eGP) procurement completed
 - Electronic Document Records Management Systems (EDRMS) differed

LAST WORD

Digital Malawi making the attainment of Digitization in Malawi a reality



PublicPrivate
Partnership
Commission

Frontier of excellence